

Celebrity **X** Cruises®  
SAIL BEYOND®



Ship Tour



**Departing June 27, 2024  
Celebrity Apex 11- Night Iceland, Ireland,  
& Scotland Cruise**



**Join Karen Brown on her inauguration  
aboard the "Edge Class" series ship on the  
quest to the Fire & Ice Island!**

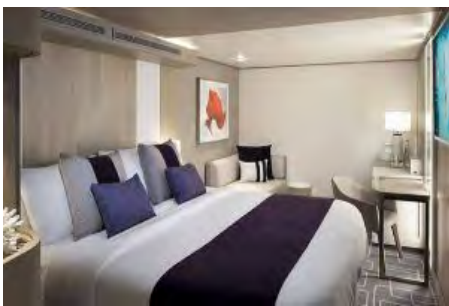
Day Number	Day of Week	Date	Port	Arrival Time	Departure Time
1	Thursday	06/27/24	South Hampton, England		4:00 PM
2	Friday	06/28/24	At Sea		
3	Saturday	06/29/24	Cork (Cobh), Ireland	8:00 AM	6:00 PM
4	Sunday	06/30/24	At Sea		
5	Monday	07/01/24	At Sea		
6	Tuesday	07/02/24	Reykjavik, Iceland	8:00 AM	8:00 PM
7	Wednesday	07/03/24	Isafjordur, Iceland	7:00 AM	4:00 PM
8	Thursday	07/04/24	Akureyri, Iceland	7:00 AM	6:00 PM
9	Friday	07/05/24	At Sea		
10	Saturday	07/06/24	Kirkwall, Scotland	10:00 AM	6:00 PM
11	Sunday	07/07/24	At Sea		
12	Monday	07/08/24	South Hampton, England	6:00 AM	







**"The real voyage of discovery consists not in seeking new landscapes, but in having new eyes."**




 360° Virtual Tour



 360° Virtual Tour



 360° Virtual Tour



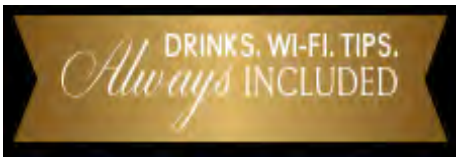
Inside Stateroom from \$4048.37 pp\*



Ocean View Stateroom from \$4333.37 pp\*  
*\*double occupancy*



Infinite Veranda Stateroom from \$4785.37 pp\*



This cruise includes the following;

- 11 Night cruise aboard the Celebrity Apex in chosen stateroom accommodations.
- All meals on-board ship in complimentary venues, including 24 hour room service (convenience fee may apply), Classic Beverage package; beers, spirits, cocktails, liqueurs, wines by the glass, up to \$10 USD each, sodas, juices, specialty coffees and bottled water.
- Gratuities, Surf WiFi Package.
- On-board entertainment including shows, discos, comedy clubs, bars, lounges, etc. provided by Celebrity Cruises.
- Age appropriate kids programming for toddlers, kids, and teens, use of all fitness facilities, pools, hot tubs, sports courts, etc.
- Taxes, fees and port charges.
- Exclusive daily group dinner dining, all on board meet & greet with Karen Brown of Just Get It Done Quilts!

*\*To participate and have access to this exclusive group event, the cruise must be booked with RGE Travels.*

*\*\* Optional custom group 2-Night Pre-cruise hotel, London tour with visit to Liberty of London & shophop package with transfer to ship, and optional sewing classes with provided Bernina 3 Series sewing machines will be available at additional cost, details and registration forthcoming.*



# GET TO KNOW US

**KAREN BROWN** - Nearly 15 years ago Karen began to quilt to escape from work stress. Beginning with minor knowledge of quilting, it wasn't until Karen joined a stitch'n'chat group with her cousin that she gained confidence to finish her first sampler quilt. With the quilt top completed, she wanted to utilize all the scraps and orphan blocks, thus creating her first AFTERQUILT improv project.



Karen realized her tastes were more modern, so she joined the Toronto Modern Quilt Guild. She has participated in two Quiltcons, making numerous friends along the way. She also began making more complicated quilts; gaining new skills with each project.

In 2018, Karen volunteered to make a video for a guild block lotto challenge. Even though she didn't know how to film and edit, she was committed to the process and teaching herself film-making. These videos lead to her popular YouTube channel, Just Get it Done Quilts which is all about helping quilters decipher all the rules and mix messages they receive.

Today, Just Get It Done Quilts has over 355 subscribers and 28 million views. Weekly, she shares on her channel her tips, tricks and strategies to help you tidy up your sewing space, use up your stash and deal with your UFO's.

Watch us on



She also has expanded her channel with an interview series Karen's Quilt Circle bringing in guests from around the world. They share their expertise, their challenges and of course their love of quilting. In this rapidly changing world, Karen is committed to help fellow quilters find the calm in their hobby, recharge and empower them, so they can be the best quilter they can be.

 [www.justgetitdonequilts.com](http://www.justgetitdonequilts.com)

# TRAVEL WITH US

The **RGE Travels** brand is unique as we don't have a "brick and mortar" location so when it's time to meet, we come to you or meet you at a location near you. That's why we are your "Travel Concierge"! As we are all US Veterans at RGE Travels, we try to live by our motto: Thank you for giving us the opportunity to serve you! It is amazing how 2 people from opposite sides of the USA have so much in common and that commonality is travel. Both of us have lived in



John Heinrich Ray Evertsen

multiple states during our youth and we each ignited our travel bug while serving overseas and during deployments in the US Air Force and the US Army. After the military, our careers in the airline industry and security and real estate didn't quell that inquisitive travel bug and in fact pushed us farther into other destinations. With all that travel and our combined destinations, RGE Travels literally has circled the globe to bring this excitement to your travels. This is the reason why we are asking you to join us on another adventure and mingle with people you never met while enjoying the sights, sounds and surroundings because when you travel with us, you're never alone.

**WITH US  
YOU NEVER  
TRAVEL ALONE!**

 [www.rgetravels.com](http://www.rgetravels.com)

**Meet Katie & Ben of K & B Sewing Machines** in the United Kingdom. As one of the only female sewing machine engineers in the country, along with Ben, they have a combined experience of over 30 years servicing and repairing all makes of sewing machines and we will be on hand to offer our technical advice and support when using your Bernina sewing machines during the cruise. Ben's



Grandfather owned J.J & JRead Sewing Machines, who were the first shop to open in Southampton and the first to sell Bernina in the UK, after the pandemic, Katie felt that she needed to bring the sewing community together and opened K&B Sewing Machines. Katie has been featured in many national and local newspapers and magazines for her work with the community have won awards from the top celebrity entrepreneurs in the UK. Their shop in Romsey, Hampshire is colorful, bright, and a creative environment, a community space like no other which inspires men and women of all ages to get creative through social groups, workshops, and classes. Both believe sewing is good for the soul and promote sewing to improve one's mental wellbeing, it's a ray of sunshine for many!



 [www.kbsewingmachines.co.uk](http://www.kbsewingmachines.co.uk)





**CLICK LOGO TO REQUEST BOOKING**

*\*This booking form for informational purpose only*

**RESERVATION & TRAVELER INFORMATION FORM**

Celebrity Apex 11 Night Iceland, Ireland, & Scotland Cruise  
Round Trip from South Hampton, England  
Departing June 27, 2024 - July 8, 2024  
Just Get It Done Quilts

**Traveler Information**

Print name (first/middle/last) EXACTLY as it appears on the Passport you will be using while traveling.

Traveler 1: \_\_\_\_\_

Traveler 2: \_\_\_\_\_

Address: \_\_\_\_\_

City: \_\_\_\_\_ State: \_\_\_\_\_ ZIP: \_\_\_\_\_

Country: \_\_\_\_\_ Email: \_\_\_\_\_

Cell #1: \_\_\_\_\_ Cell #2: \_\_\_\_\_

Roommate's Name (if not Traveler 2): \_\_\_\_\_

**Type of Stateroom Requested** - \* Per person Double Occupancy

\_\_\_ Inside from \$4048.37\* \_\_\_ Ocean View from \$4333.37\*

\_\_\_ Infinite Veranda from \$4785.37\*

\_\_\_ Single Occupancy specify stateroom type: \_\_\_\_\_

Deposit per person \$900 USD\* Final Payment Due: 29 MAR 24  
(Deposit for single occupancy \$1150 USD)

\*\$250 of deposit nonrefundable per person

**Additional Stateroom Options - Rates provided upon request**

\_\_\_ Aqua Class \_\_\_ Sky Suite \_\_\_ Aqua Suite \_\_\_ Sunset Sky Suite

\_\_\_ Penthouse \_\_\_ Royal Suite \_\_\_ Celebrity Suite

Captains Club Number: \_\_\_\_\_

Crown & Anchor Number: \_\_\_\_\_

**Flight Arrangements Needed**

Airport Departure City: \_\_\_\_\_

Airport Return City: \_\_\_\_\_

Frequent Traveler Number and Airline: \_\_\_\_\_

*\*Air will be booked no later than 90 days before departure. Should any flight interruptions occur, Air by Celebrity will notify cruise ship and provide assistance and alternate travel arrangements.*

**Optional Pre/PostCruise Package\***

\_\_\_ Optional 2- Night Pre-Cruise Hotel/London Tour & Shop Hop, and ship Transfer - South Hampton (London), England

*\*Packages include accommodations, airport to hotel /port transfers, and breakfast Details and pricing details and registration forthcoming.*

**Security Information**

To make your vacation as enjoyable as possible and to assist us in preparing official documentation, please provide the following:

Traveler 1: \_\_\_ Male \_\_\_ Female

Date of Birth (MM/DD/YYYY): \_\_\_/\_\_\_/\_\_\_

If air is included: Add Redress #, if available: \_\_\_\_\_

Passport Number: \_\_\_\_\_ Citizenship: \_\_\_\_\_

City/State/Country of Birth: \_\_\_\_\_

Date of Issue: \_\_\_\_\_ Exp. Date: \_\_\_\_\_

Traveler 2: \_\_\_ Male \_\_\_ Female

Date of Birth (MM/DD/YYYY): \_\_\_/\_\_\_/\_\_\_

If air is included: Add Redress #, if available: \_\_\_\_\_

Passport Number: \_\_\_\_\_ Citizenship: \_\_\_\_\_

City/State/Country of Birth: \_\_\_\_\_

Date of Issue: \_\_\_\_\_ Exp. Date: \_\_\_\_\_

**Passports and VISAS**

All guests must have a valid passport with at least 6 months validity from return date. It is the responsibility of each guest to ensure any applicable visas for all countries visited have been obtained prior to departure. Failure to obtain correct documentation will mean the guest will be unable to participate in particular shore excursions and may be denied boarding and/or entry into certain countries. Meeting necessary passport and visa entry requirements and costs is the sole responsibility of guests.

**Emergency Contact**

Name: \_\_\_\_\_ Relationship: \_\_\_\_\_

Tel: \_\_\_\_\_ Cell: \_\_\_\_\_

**Health**

Some areas on the ship may involve considerable walking, stairs or inclines. Travelers should be in reasonably good health, persons requiring assistance advised to be accompanied by a companion who is capable of and totally responsible for providing assistance. All needs of this nature must be relayed in advance of travel.

Initial here to indicate you have read and understand this: \_\_\_\_\_

\_\_\_ Dietary dietary restrictions, if any: \_\_\_\_\_

\_\_\_ Handicapped /mobility assistance needed - check mark and list below:  
\_\_\_\_\_

**Dining:** Early seating with group at specified same tables each night.  
5:30PM -6:00PM\* - hours of dining room operation vary according to ship schedule.

**Price Includes:** 11- Night Iceland, Ireland, & Scotland cruise, in selected accommodations, taxes, fees and port charges, all meals in complimentary venues on-board ship including 24 hour room service, classic beverage package: beers, spirits, cocktails, liqueurs, wines by the glass up to \$10 USD each, sodas, juices, specialty coffees and bottled water, gratuities and unlimited Surf Wi-Fi, event gift, 1 bottle of wine per stateroom, entertainment including shows, discos, comedy clubs, bars, lounges, etc. Age appropriate kids programming for toddlers, kids, and teens, use of all fitness facilities, pools, hot tubs, sports courts, etc. and daily exclusive group dinner dining, and meet & greets, with Karen Brown of Just Get It Done Quilts!

*\*To participate in this special group event cruise, cruise booking must be made through RGE Travels.*

**Price Excludes:** Airfare, airport transfers, post/pre hotel/tour, shore excursions, travel insurance, laundry, phone calls, items of a personal nature, optional pre cruise transfer, hotel, tour, and transfer to ship packet, and sewing classes which are to be announced and details forthcoming.

**Perks:**

Non-suite staterooms

All Included: Classic beverage package\*; gratuities and Surf Wi-Fi  
**\*CLICK HERE FOR DETAILED LIST OF BEVERAGE TYPES INCLUDED**

Suites - The Retreat, exclusive restaurant, lounge and outside deck area, premium drinks, premium Wi-Fi, tips, and an onboard credit to spend almost any way you like.

---

**Travel Insurance:**

Travel insurance is available and is strongly recommended. Travel insurance is offered to protect your dollar investment due to unforeseen circumstances and should be purchased within 14 days of your reservation for pre-existing medical condition exclusion waiver protection.

Travel insurance is provided though Travel Guard/TravelEx. For any illness, cancellations or changes, the client will follow Travel Guard's and TravelEx policies and regulations. An optional cost efficient quote will be emailed along with your trip confirmation and can be purchased with your card on file. Alternatively, you're welcome to obtain your own travel insurance.

Check Mark Acknowledgment

**FOR QUESTIONS CLICK HERE**

**Terms & Conditions**

All payments ticketed by Celebrity Cruises will be refunded, less the applicable cancellation fees as outlined below.

**Deposit:** \$900 deposit \$250 of deposit is non-refundable per person

**Group Refund and Cancellation Schedule Per Person**

90 or more days prior to cruise date - \$250 per person  
89 to 75 days – \$250 and 25% cruise fare charge per person  
74 to 61 days – \$250 and 50% cruise fare charge per person  
60 to 31 days - \$250 and 75% cruise fare charge per person  
30 to 0 days -100% cruise fare charge per person  
100% cruise fare charge per person for no shows or if cancellation is made after travel is scheduled to begin. No refund for unused portions of the trip.

**Itinerary:** RGE Travels/Holiday Cruises & Tours/Network are not responsible for any changes to itinerary before and during cruise by Celebrity Cruise Lines.

**Booking Terms and Conditions:** These conditions incorporate the basis upon which bookings are accepted by RGE Travels/Holiday Cruises & Tours/ Network and Celebrity Cruise Lines. By making a booking you are agreeing to these terms & conditions. Conditions on this page do supersede conditions stated in the Brochure however for additional terms and conditions not stated here please refer to the 'Booking Conditions and other Important Information' pages on website and [www.celebritycruises.com](http://www.celebritycruises.com). These must be studied prior to making the commitment of paying the deposit as they must be referred to. Additional terms and conditions may be applicable to group bookings and will be advised as they become known.

**All guests will be required to adhere to all health and safety protocols established by Celebrity Cruise Lines at time of cruise. For more information concerning present protocols go to [www.celebritycruises.com](http://www.celebritycruises.com).**

**Talent/Artist:** RGE Travels/Holiday Cruises & Tours are not responsible for the content or cancellation of talent/artist before and during cruise.

**I have read, understand and agree to all terms and conditions, including penalties that result in the event of a cancellation.**

Traveler 1: \_\_\_\_\_

Traveler 2: \_\_\_\_\_

Date: \_\_\_\_\_

**Typed full name will be used as signature**

---

**RESERVATION PROCESS**

**CLICK LOGO TO REQUEST BOOKING**

*\*This booking form for informational purpose only*



Affiliate of

